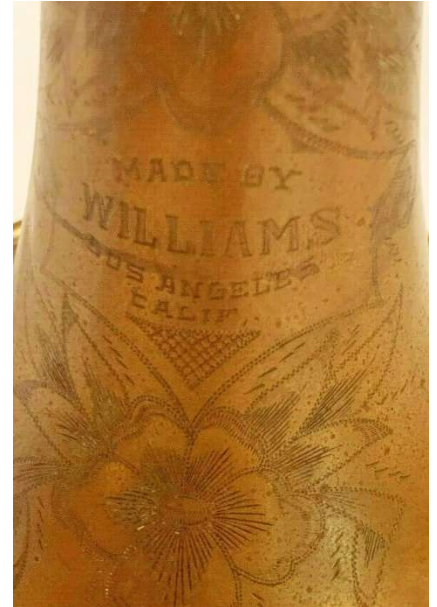


Earl O. Williams

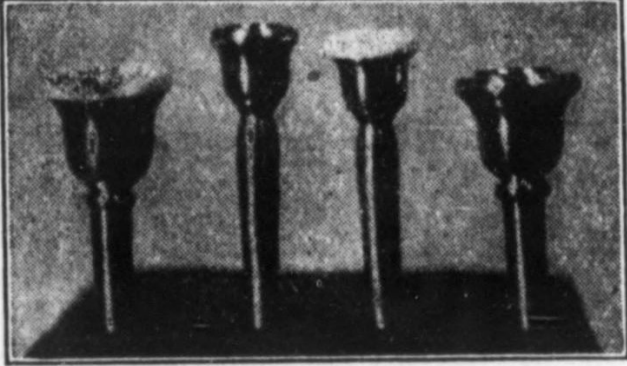
Los Angeles, CA

- 1890 Earl Orbra Williams is born in Gibsonburg, OH.
 - 1910 Earl is working as a drug store salesman (census).
 - 1915 Earl is an instrument maker with Olds (directory).
 - 1917 Earl is still with Olds (WWI draft).
 - 1920 Band instrument repair (census).
 - 1923 Earl has a band instrument repair shop as 432 South Main St, room 28, in LA (city directory).
 - 1928 Williams & Wallace, trombone makers, 432 S. Main St, room 51 (directory) [With performer John Kipper (Spike) Wallace.]
 - 1930 Williams, manufacturer of musical instruments (census).
 - 1940 Williams, trombone maker, 2580 Venice Blvd, room 221 (directory).
 - 1958 Earl moves to Burbank, CA.
 - 1971 Earl dies in Burbank on July 5.
- Photos 1-3 of #685 (auction photos).
Photo 4 of #68x (auction photo).

Below is trumpet #14664 with "Pat. July 1910" for valves made by Blessing c.1920. This was probably a stencil horn sold by Williams around that time (auction photos).



1924 International Musician ad



De Luxe Mouthpieces
Are especially good for even register,
power and tone quality.

	Silver Plated	
	Metal	Ivory
Cornet	\$4.00	\$7.00
Trumpet	4.50	7.50
Trombone, Baritone	5.00	8.00

EARL WILLIAMS
432 S. Main St. Los Angeles, Cal.



#432 South Main St in 2023

